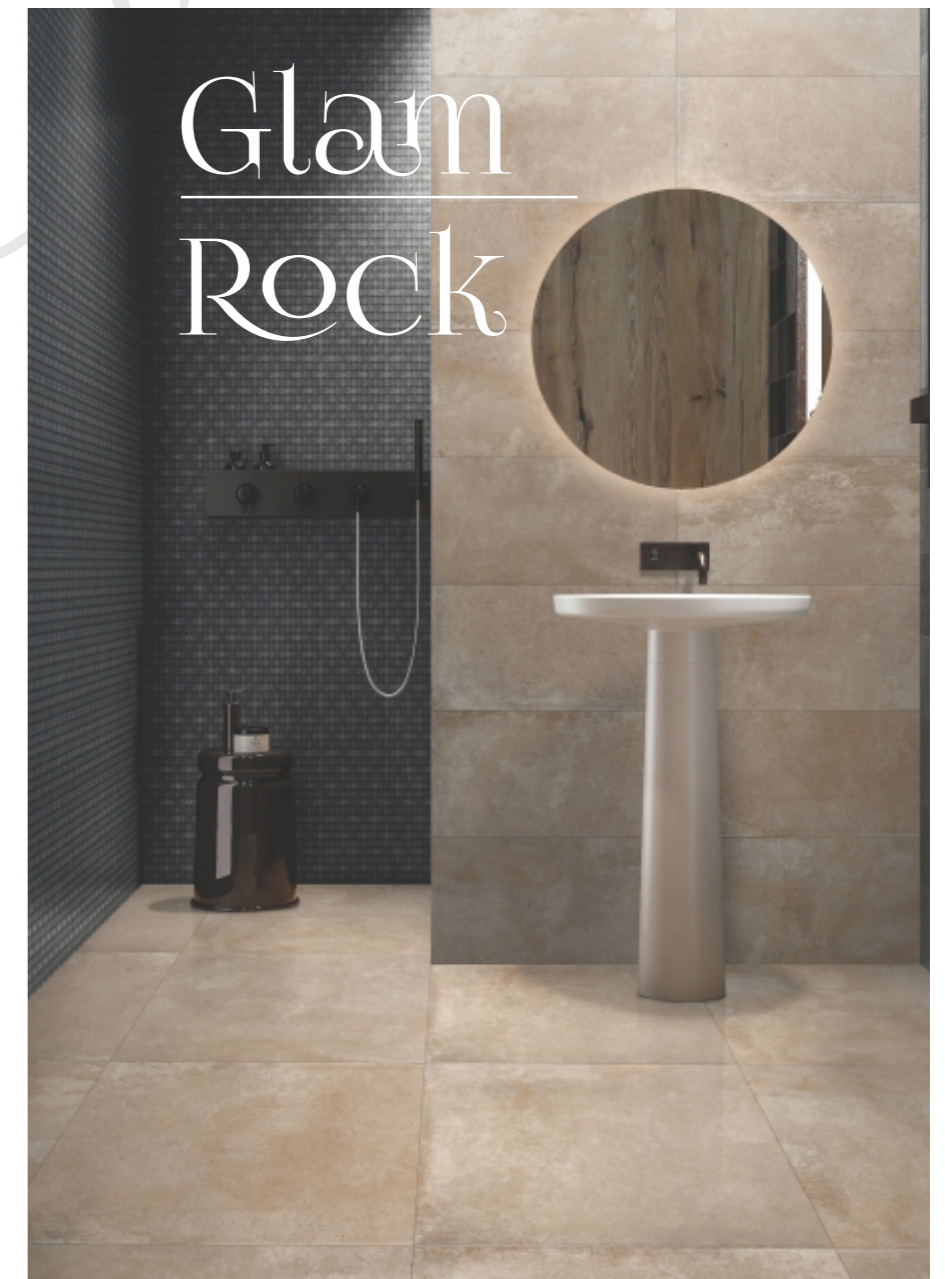


5 apollo



**VARMORA GRANITO PVT. LTD.**

**HEAD OFFICE** : 8/A National Highway, At.-Dhuva, Tal.-Wankaner, Dist. Morbi.  
Mob.: +91 98252 23068  
E-mail: marketing@varmora.com

**CORPORATE OFFICE** : A-54, 1st Floor, Elite Auto House, Mathuradas VasANJI Road,  
Andheri - Kurla Road, Andheri (EAST).  
Tel.: +91-22-28389790 / 91 / 92, Fax: +91-22-28389794  
E-mail : mumbai@varmora.com

**Customer Care: 1800 212 0053**

Follow us :



[www.varmora.com](http://www.varmora.com)

**Panache  
of premier style**

Accentuate your belief in voguish surfaces  
with these urban creations



## VARMORA ABOUT

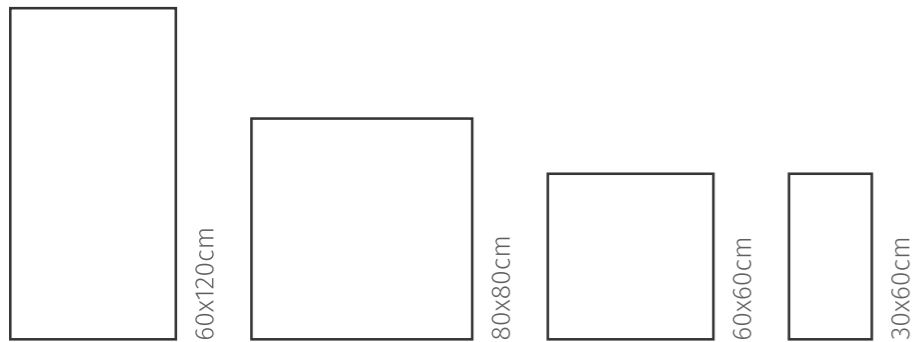
---

Varmora Granito Pvt. Ltd. came into being with a clear vision - to become a global leader in the world of ceramics in the span of two decades, our futuristic group has grown by leaps and bounds into a nationwide conglomerate manufacturing quality ceramic, porcelain and vitrified tiles. The stability of the company is as good as any 25 years old experienced organization. Spearheaded by visionaries Mr. Bhavesh Varmora, our multi-million business has a vast network of more than 5000 retail outlets and over 700 dealers, we also run around 20 branches offices with more than 1200 professionals across the country.

Varmora has created a modern infrastructure by adopting new-tech and upgrading manufacturing techniques to improve production capacity and quality. Varmora has 10 different state-of-the-art plants across the country with over 100,000 sq. mts. capacity, which allows them to keep their status as the industry leaders. The company has also adopted several environment-friendly manufacturing techniques like water-saving technology. Elaborate and extensive R&D programs have also been set-up to assist in Varmora's endeavor to create more innovative products.

# 5 Creations

varieties of stone surfaces with bold hues, exotic finishes and sizes.



8 Face maximum size  
Thickness : 9mm  
Finish : Polished & Matt

## Apollo Pearl

This immaculate glazed porcelain tile is available in 4 varied sizes and 2 distinct finishes, embrace the modern poise of these elegant impressions.

APOLLO Pearl

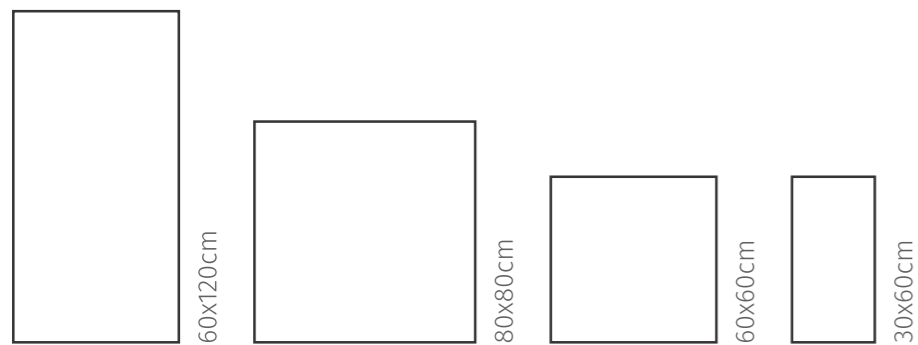
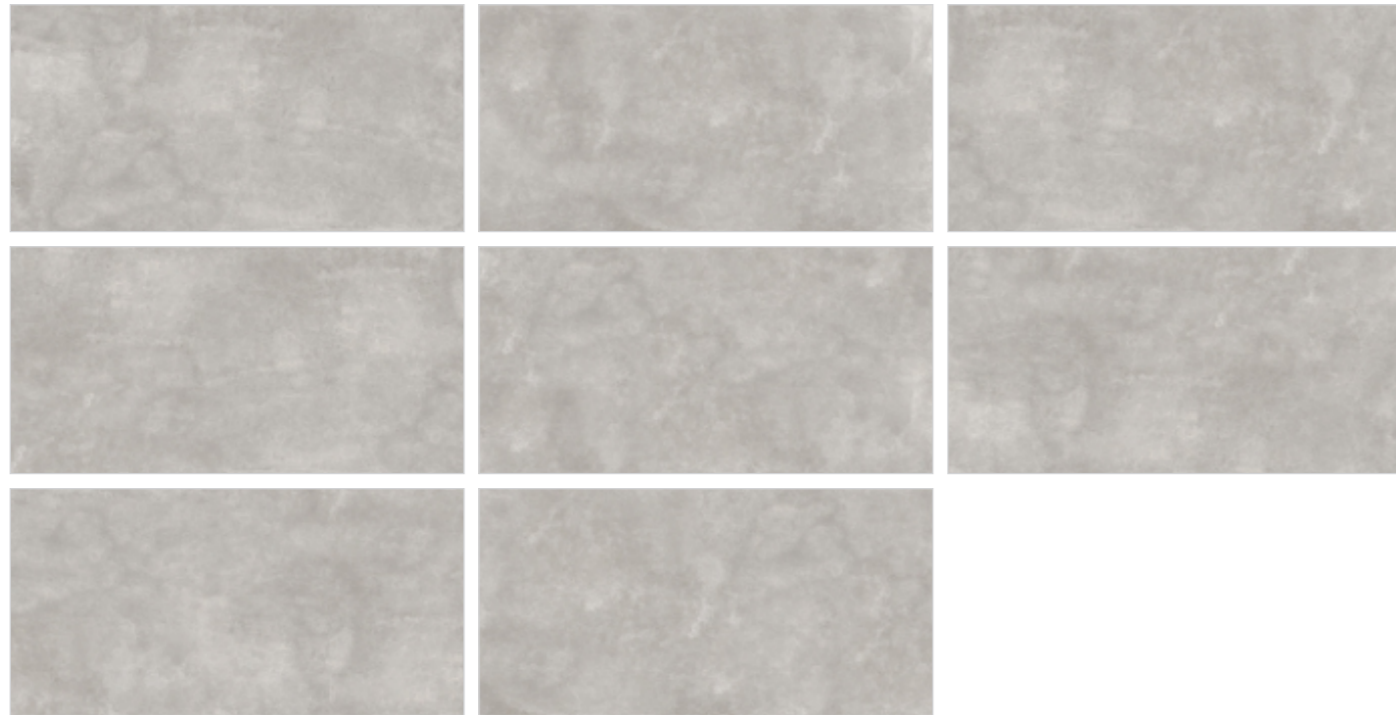
residence corporate airports malls banks



Glazed porcelain tiles (international standard) | Vitrified stoneware (indian standard).  
Rectified

# 5 Creations

varieties of stone surfaces with bold hues, exotic finishes and sizes.



8 Face maximum size  
Thickness : 9mm  
Finish : Polished & Matt

## Apollo Silver

Hit the mark with splendid silver tone of Apollo Silver that makes a powerful impression with its elite finishes and robust 9 mm thickness.

APOLLO Silver

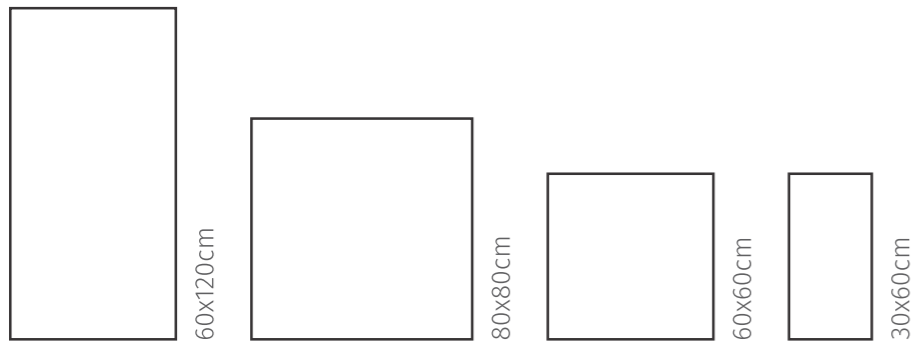
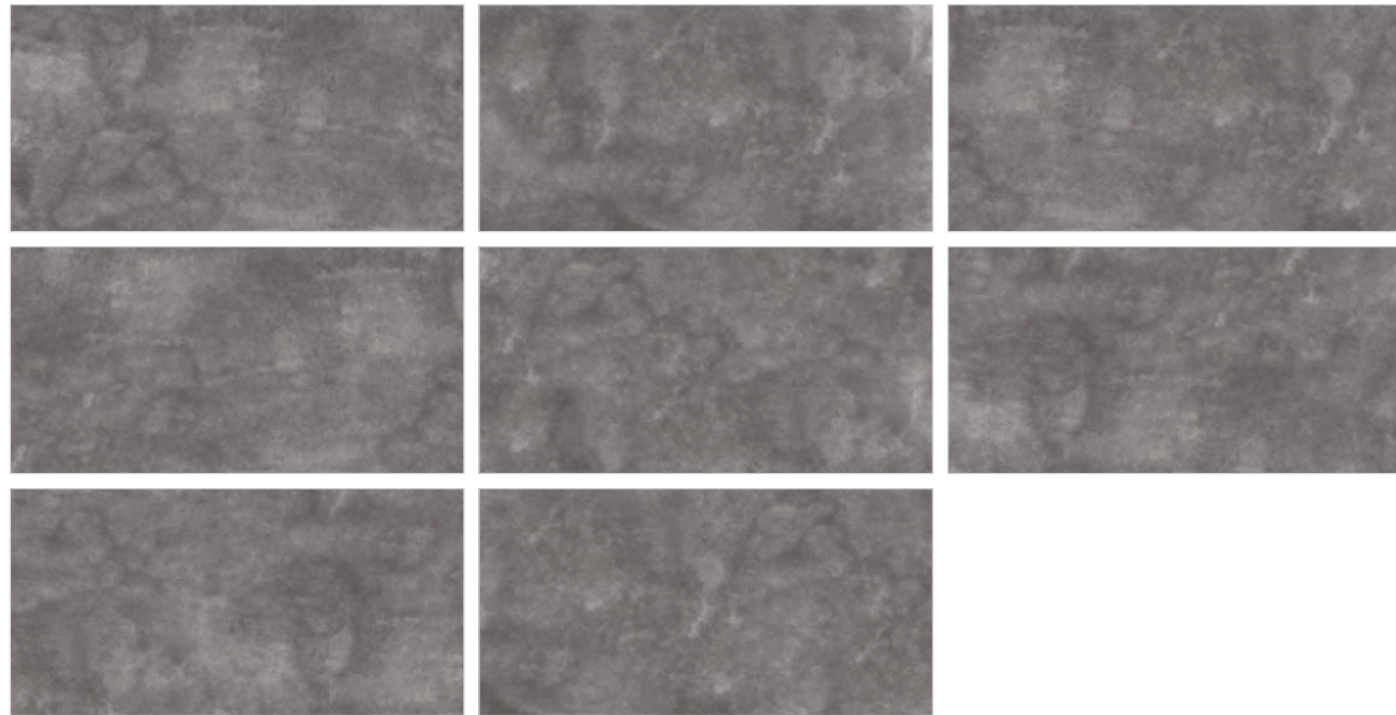
residence corporate airports malls banks



Glazed porcelain tiles (international standard) | Vitrified stoneware (indian standard).  
Rectified

# 5 Creations

varieties of stone surfaces with bold hues, exotic finishes and sizes.



8 Face maximum size  
Thickness : 9mm  
Finish : Polished & Matt

## Apollo Nero

Go dark and dazzle with this immaculate creation, which is being offered to you in 4 marvelous sizes with the largest size having 8 faces.

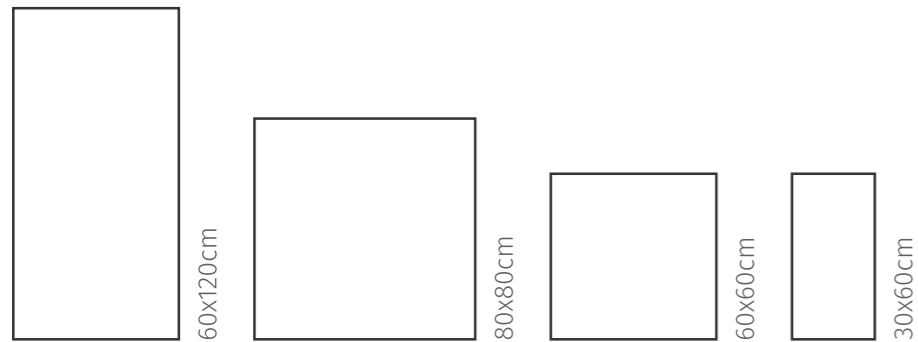
residence corporate airports malls banks



Glazed porcelain tiles (international standard) | Vitrified stoneware (indian standard).  
Rectified

# 5 Creations

varieties of stone surfaces with bold hues, exotic finishes and sizes.



8 Face maximum size  
Thickness : 9mm  
Finish : Polished & Matt

## Apollo Tusk

For a blissful and captivating experience, grab a hold of these modern day surfaces that can cover lavish spaces elegantly with its multiple faces.

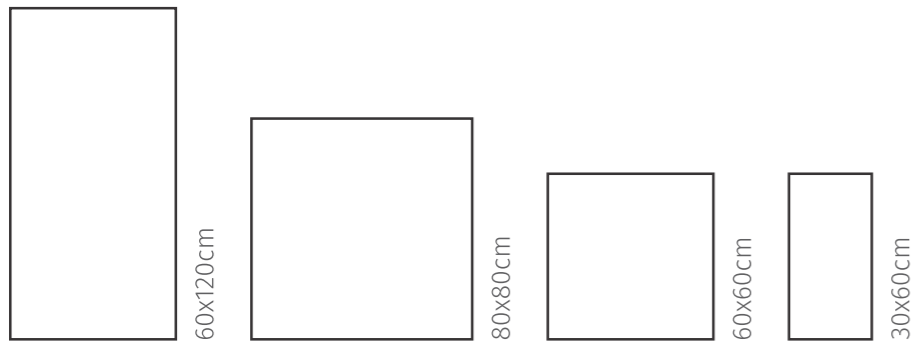
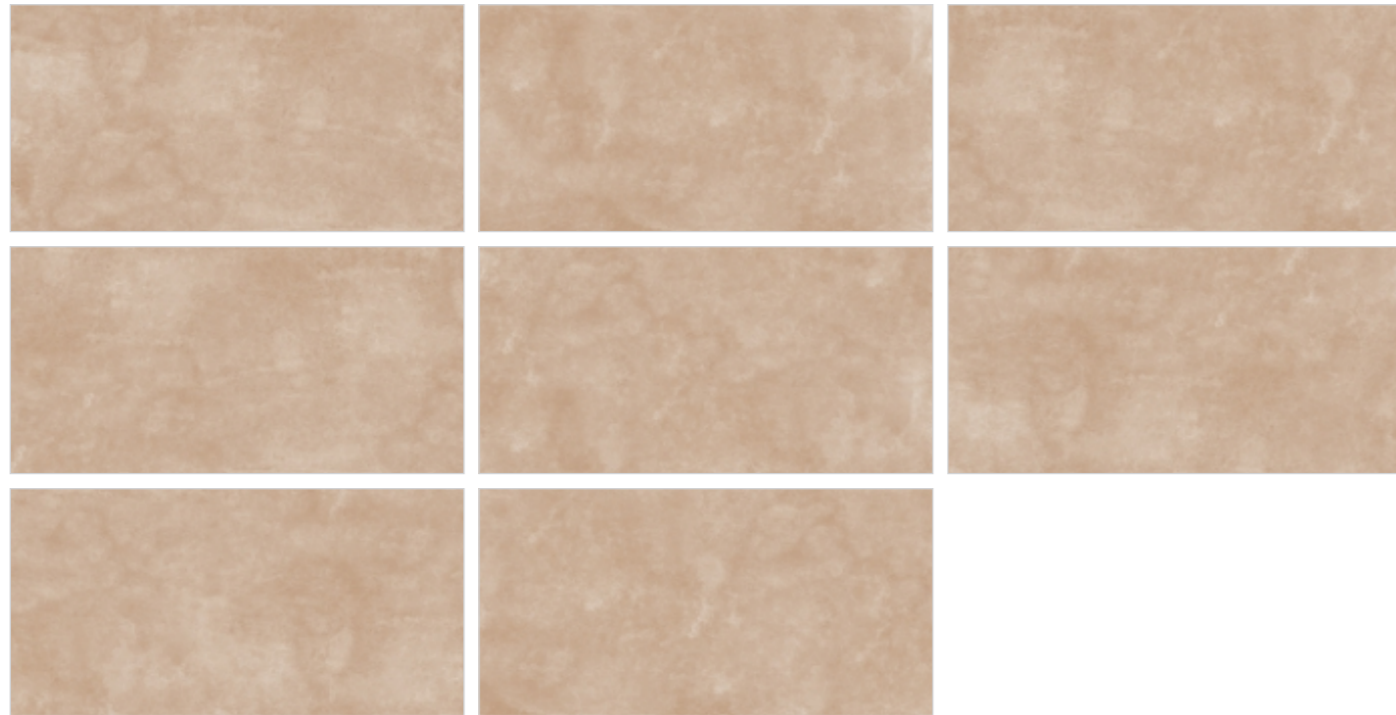
- residence
- corporate
- airports
- malls
- banks



Glazed porcelain tiles (international standard) | Vitrified stoneware (indian standard).  
Rectified

# 5 Creations

varieties of stone surfaces with bold hues, exotic finishes and sizes.



8 Face maximum size  
Thickness : 9mm  
Finish : Polished & Matt

## Apollo Beige

Here is the epitome of glazed porcelain tiles that comes in four sizes, two premier finishes and a very pristine shade of natural brown color.

APOLLO Beige

- residence
- corporate
- airports
- malls
- banks



Glazed porcelain tiles (international standard) | Vitrified stoneware (indian standard).  
Rectified

## OUR TECHNICAL & QUALITY FACTS

SR. NO.	CHARACTERISTIC	TEST METHOD	IS 15622 :2017 (GROUP B I a)	VARMORA VALUE
<b>A</b>				
<b>DIMENSION &amp; SURFACE QUALITY</b>				
1	Deviation in Length & Width	IS - 13630 - 1	± 0.10%	± 0.10%
2	Deviation in Thickness	IS - 13630 - 1	± 5.00%	± 3.50%
3	Straightness of sides	IS - 13630 - 1	± 0.10%	± 0.10%
4	Rectangularity	IS - 13630 - 1	± 0.10%	± 0.10%
5	Surface Flatness	IS - 13630 - 1	± 0.50%	± 0.20%
6	Surface Quality	IS - 13630 - 1	Minimum 95 % of tiles shall be free from visible defects	95%
<b>B</b>				
<b>PHYSICAL PROPERTIES</b>				
1	Water Absorption	IS - 13630 - 2	≤0.08%,Avg.	0.06%,Avg.
2	Modulus of Rapture(N/mm <sup>2</sup> )	IS - 13630 - 6	Avg. 35 N/mm <sup>2</sup>	Avg. 40 N/mm <sup>2</sup>
3	Breaking Strength (N)	IS - 13630 - 6	Thickness <7.5 mm = 700 N, Min Thickness ≥7.5 mm = 1300 N, Min	Thickness ≥7.5 mm = 1700 N
4	Moisture Expansion (mm/m)	IS - 13630 - 3	0.02 Max.	0.01 Max.
5	Scratch Hardness of Surface (Mohs' Scale)	IS - 13630 - 13	5, Min	5, Min*
6	Resistance of Surface Abrasion (Glazed tiles)	IS - 13630 - 11	Class II, Min.	Class IV
7	Co-efficient of linear thermal expansion	IS - 13630 - 4	6x10 <sup>-6</sup> , Max	6x10 <sup>-6</sup> , Max
8	Thermal Shock Resistance	IS - 13630 - 5	10 Cycles, Min	10 Cycles, Pass
9	Crazing Resistance	IS - 13630 - 9	4 Cycles at 7.5 Bar ,Min	4 Cycles, Pass
10	Impact Resistance- Coefficient of Restitution	IS - 13630 - 14	0.55, Min	0.55, Min
11	Coefficient of Friction	-	Manufacturer Norms	Manufacturer Norms
12	Frost Resistance	IS - 13630 - 10	Manufacturer Norms	No Damage
13	Bulk Density (g/cc)	IS - 13630 - 2	2.2, Min	2.3, Min
<b>C</b>				
<b>CHEMICAL PROPERTIES</b>				
1	Resistance to Staining	IS - 13630 - 8	Class 1, Min	Class 2, Min
2	Resistance to Household Chemicals	IS - 13630 - 8	Class AA,Min	Class AA
3	Resistance to Acids & Alkalis	IS - 13630 - 8	Required If agreed according to chemical resistance class indicated by manufacturer	Resistance

VARMORA Values given above are own valued, Which we tries to maintain, how ever test results may differ up to the limit prescribed under IS 15622 :2017 (GROUP B I a)  
\* Minimum 5 On matt tiles.

Note: Colour shown are as accurate as the limitations of the printing process will allow. Prospective customers are advised to inspect a sample of the tile before ordering. Our effort has been made to ensure the accuracy of the information given. However, the company reserve the right to change the specifications without prior notice. Sometime variations in shade or size being inherent to ceramic industry may occur. Before fixing, we advise you to follow the fixing instructions on the cartons (box) of the tiles. No responsibility will be accepted by the company once the tiles have been fixed.

## OUR GLOBAL SHIPMENT PACKING MATRIX

CNT / TYPE	SIZE (CM)	THICKNESS (Average)	PCS	SQ MTR / BOXES	WEIGHT / BOXES (KGS)	BOXES / PALLETS	SQ MTR	WEIGHT / PALLETS	BOXES	PALLETS
							PALLETS		CONTAINER	CONTAINER
20 FEET	60X60	8.5mm	4.00	1.44	28.50	40.00	57.60	1160.00	960.00	24.00
20 FEET	60X120	9mm	2.00	1.44	30.00	32.00	46.08	980.00	896.00	28.00
40 FEET	120 X 240	9mm	1.00	2.88	61.00	40.00	115.20	2540.00	440.00	11.00
40 FEET	80 X 260	15mm	1.00	2.08	73.00	28.00	58.24	2144.00	336.00	12.00
40 FEET	90 X 180	9mm	2.00	3.24	68.00	35.00	113.40	2480.00	385.00	11.00
40 FEET	120 X 120	9mm	2.00	2.88	60.00	35.00	100.80	2200.00	420.00	12.00
20 FEET	80 X 160	9mm	2.00	2.88	55.00	25.00	72.00	1475.00	450.00	18.00

Delivering  
surface innovations safely

